


## Mouse GM-CSF protein

Cat #: PRP1077

Size: 5 µg/20 µg/100 µg/1 mg

### Product Information

	<b>Product Name:</b> Mouse GM-CSF protein		
<b>REF</b>	<b>Catalog Number:</b> PRP1077	<b>LOT</b>	<b>Lot Number:</b> Refer to product label
	<b>Purity:</b> > 96 % as determined by SDS-PAGE		
	<b>Storage:</b> Store at -20°C		<b>Preparation method:</b> E.coli
	<b>Shipping:</b> The product is shipped at ambient temperature.		

**Background:** Granulocyte-Macrophage Colony Stimulating Factor (GM-CSF) was initially characterized as a growth factor that can support the in vitro colony formation of granulocyte-macrophage progenitors. It is produced by a number of different cell types (including activated T cells, B cells, macrophages, mast cells, endothelial cells and fibroblasts) in response to cytokine of immune and inflammatory stimuli. Besides granulocyte-macrophage progenitors, GM-CSF is also a growth factor for erythroid, megakaryocyte and eosinophil progenitors. GM-CSF has a functional role on nonhematopoietic cells. It can induce human endothelial cells to migrate and proliferate. Additionally, GM-CSF can also stimulate the proliferation of a number of tumor cell lines, including osteogenic sarcoma, carcinoma and adenocarcinoma cell lines.

**Sequence:** Amino acid sequence derived from Mouse GM-CSF (Ala18-Lys141) (P01587) was expressed.

**Protein length:** The recombinant Mouse GM-CSF consists of 124 amino acids and predicts a molecular mass of 14.2 kDa.

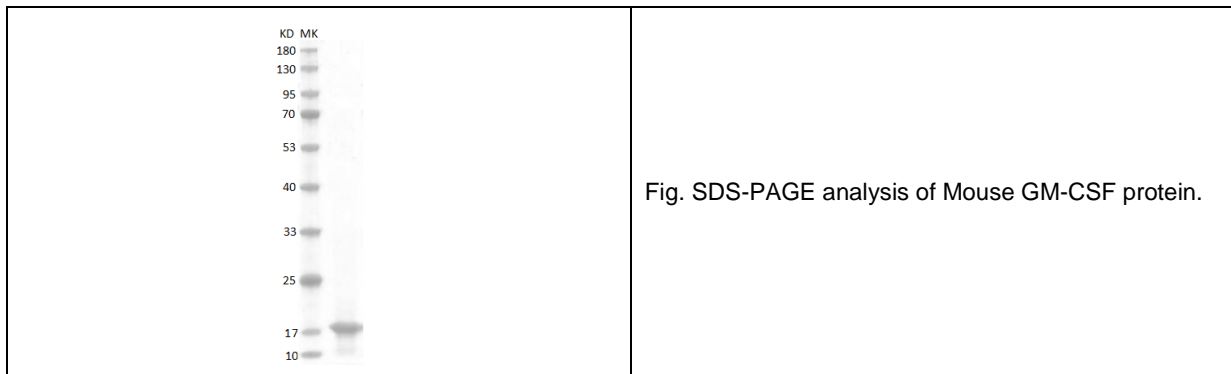
**Biological Activity:** Measured in a cell proliferation assay using FDC-P1 cells. The ED<sub>50</sub> for this effect is 1.203 ng/mL.

**Endotoxin:** < 1 EU per µg of the protein as determined by the LAL method.

**Formulation:** Liquid in from sterile 20 mM Tris, 150 mM NaCl, 5% Glycerol, pH 8.0.

**Storage Instructions:** The recombinant Mouse GM-CSF protein product should be stored desiccated below -20°C. The protein should be stored at 4°C between 2-7 days and for future use below -20°C. For long term storage it is recommended to add a carrier protein (0.1% HSA or BSA). Please prevent freeze-thaw cycles.

**Usage notes:** Always centrifuge tubes before opening. It is recommended to dilute the protein using the PBS buffer or Protein storage solution to working concentration.



**Note:** The product listed herein is for research use only and is not intended for use in human or clinical diagnosis. Suggested applications of our products are not recommendations to use our products in violation of any patent or as a license. We cannot be responsible for patent infringements or other violations that may occur with the use of this product.